



Grocery Store Details Emerge at Town Meeting

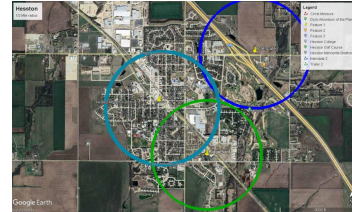


The Beneficent Heartland Foundation (BHF) has taken some important steps toward building a Grocery Store that will play a key role in reimagining downtown Hesston.

That's the message Beneficent CEO and BHF Founder and Director Brad Heppner delivered to an overflow audience at the Prairie Pavilion in Hesston in August.

CONTINUED - GROCERY DETAILS

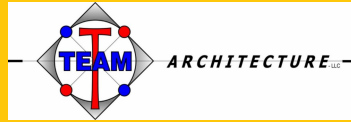
Grocery Store Located to Increase Downtown Foot Traffic



Hesston's new grocery store will be located at a strategic spot that will not only be convenient for the city's residents, but it will play a key role in revitalizing the downtown area, Beneficent Heartland Foundation Director Brad Heppner told city residents.

CONTINUED - LOCATION

Architect Named for Golden Plains Credit Union



The Golden Plains Credit Union has a current office location in Hesston on Main Street. The ideal Hesston Grocery Store location is on the Credit Union's office land comprising four adjacent Main Street properties combined with four additional adjacent lots currently under the control of BHF. The Credit Union has agreed to do a property exchange for a new office building to be built on the corner of Hesston Road and Lancaster Avenue in return for their Main Street land for the new build of the Grocery Store.

Team Architecture, LLC is under contract for full architectural services to design and manage the construction of the new Credit Union offices. MKEC Engineering, Inc will be providing landscape design and all engineering services. Both companies are Kansas-based.



Childcare Needs to be Studied

The Beneficent Heartland Foundation's Community Reinvestment Committee is collecting information on various consulting firms to study the needs and requirements for a licensed permanent pre-K facility and licensed education team. The Committee decided to initiate these studies based on encouragement and input collected from town residents, parents and educators on the needs Hesston faces.

CONTINUED - CHILDCARE

Garden Community Church Gets New Location

The Garden Community Church has a newly renovated and greatly expanded location in Old Town Center in Hesston thanks to an exchange agreement with BHF. The Garden Church's former location at 116 North Main Street was needed by BHF for land on which to build the new Main Street Grocery Store.

CONTINUED - CHURCH



"I get my exercise by parking the car ten rows away from the grocery store."

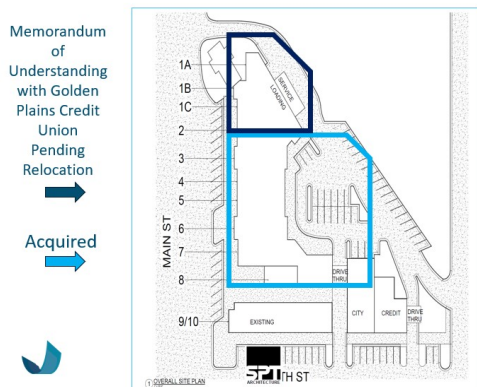
GROCERY DETAILS (CON'T)

The project has hit milestones that were outlined at the meeting including formation of a Grocery Store Task Force and completion of studies to identify the best use location for the Grocery Store and other economic development that can revitalize downtown. Goals of the research included locating the store for easy access for residents with no or low vehicle access (a USDA-measured indicator of food accessibility), promoting foot traffic among area retailers and by revitalizing our downtown central retail district.

Key milestones in the project include:

- Reaching a Memorandum of Understanding between the City and White's Foodliner to operate the store. The White family has been operating grocery stores in Kansas since 1953.
- Purchasing eight targeted properties and relocating three of four former Main Street businesses to improved and expanded locations.
- Engaging a Kansas-based architectural and engineering firm for the design and construction of the new office building for the relocation of Golden Plains Credit Union to make way for the new Grocery Store on Main Street.

In addition to drawing more economic and social activity to downtown, the White family estimates that they may hire as many as 50 jobs at the Grocery Store. Jordan White, Vice President of White's Foodliner, told the crowd how excited he was about the project. "I have a passion for this project," he said.



LOCATION (CON'T)

The Main Street location was identified for its proximity within a half a mile from as many residents as possible. "That's to give access to residents with low access to vehicles," Brad said. "They can walk, ride a bicycle with baskets and ride a scooter to the new store."

In addition, the store will include underground parking and the store will be one anchor that will drive foot traffic between two other downtown anchor businesses: our pharmacy and our hardware store, all located within the central retail block from each other. That will enable drivers to park and walk among other downtown businesses.

"Foot traffic is important," he said. "You get the multiplier effect on foot traffic where people are coming in and out of a store and each of them benefits from each other."

CHILDCARE (CON'T)

A study will be commissioned in 2025 for the creation of a Licensed Pre-K Permanent Operations in Hesston, which has few childcare options at this time. Board members are reaching out to consultants and stakeholders to get relevant facts about funding sources and advisors who are experts in childcare.

CHURCH (CON'T)

The Garden Church received two side-by-side properties at a more desirable location on North Old Highway 81 that were transformed into one facility comprising their newly renovated church offices and expanded youth center. BHF donated the renovation proceeds as part of the property swap.

CHURCH OFFICE BEFORE AND AFTER



Community Directors

- David Kauffman, Mayor of Hesston
- Kevin Logan, Superintendent of Hesston School District
- Dr. Ross Peterson-Veatch, Interim President of Hesston College
- Derek Yoder, VP of Fund Development of Bluestem Communities
- Denise Goevert, Member of Family-Owned Retail
- Gary Emry, Hesston City Administrator
- Andrea Braker, Executive Director of Hesston Chamber

Beneficent Directors

- Aurelia Heppner, President of Beneficent Heartland Foundation
- Brad Heppner, Ben Director
- Derek Fletcher, Ben Director
- Emily Bowersock Hill, Beneficent Lead Kansas Director



105 N. Main Street
Hesston, KS 67062
(620) 273-2582
Info@benheartlandfoundation.org

➔ VISIT THE FOUNDATION AND GROCERY STORE WEBSITES TO STAY UP-TO-DATE
www.benheartlandfoundation.org
www.hesstongrocerystore.org